

# The Harbour Inc.



SUPPORT

*Parenting support*



ACCEPTANCE



LIFE SKILLS TRAINING



STABILITY



*Positive youth development*



*Educational & employment support*



**FY12**  
ANNUAL REPORT

## OUR MISSION

The Harbour offers youth safety today  
and opportunities for a successful tomorrow



*Since 1971, The Harbour has provided housing and supportive services to community youth in crisis. Since our founding, hundreds of youth have passed through our doors who were deflected from homelessness, graduated from our programs, and are now living independently.*

*Today, our wide spectrum of youth housing ensures we can meet youth where they are and provide comprehensive services designed to foster self-sufficiency and success.*

# A LETTER FROM OUR EXECUTIVE DIRECTOR

## DEAR FRIENDS,

Last year, one of our largest challenges was to ensure adequate funding to meet the expanding needs of the population we serve. Through cost reduction methods and aggressive fundraising efforts, we have been fortunate to end the past two fiscal years with a surplus. However, with a large percentage of our funding coming from the state, the dire financial situation in Illinois leaves us vulnerable. As part of our Strategic Plan, we are decreasing our dependency on our line of credit to self-support our cash flow needs. Our goal in FY13 is to grow individual giving as a sustainable revenue source in order to foster financial stability. We have expanded our volunteerism efforts to introduce new individuals to our mission, and have put a large focus on facility improvements.

*We are proud to offer several housing options, ensuring we can assess each youth's individual needs and place them appropriately.*

In response to observing youth requiring longer stays in our Emergency Shelter, we have recently designated two of our six beds at the Shelter as a transitional component. This has enabled us to provide 24 hour supervision and guidance to youth with increased needs or histories of significant trauma. We are proud to offer several housing options, ensuring we can assess each youth's individual needs and place them appropriately.

We are grateful for the community involvement of so many dedicated individuals and groups over the past year.

The outpouring of support from civic groups, corporate teambuilding groups, and other committed individuals has allowed us to improve our facilities greatly. We thank all of our community supporters—your generosity helps ensure we can continue to provide quality services to youth who most need it.

Warm Regards,

*Randi M. Gurian*

Randi M. Gurian, LCSW  
Executive Director



### EXECUTIVE DIRECTOR

Randi M. Gurian, LCSW

### BOARD OF DIRECTORS FY12

Rebecca Casey

Mary Kate Driscoll (Secretary)

Joy Guttchow (Chair)

Krista Hubbard

Timothy Liace

Martha Lindstrom (Treasurer)

Gayle Nelson

Jay Patel

Ted Sigg

### LIFETIME MEMBERS

Leanne Berry, CPA

Joan W. DiLeonardi, PhD

Stewart Chalem

Dennis Nilsson

Mary Seeberg

Gene Servillo

Matthew Staman

Lindsey J. Whyte



## YOUTH HOMELESSNESS

*by the numbers*

**25,000 YOUTH**

homeless each year in Illinois

**1,098 CALLS**

from our immediate service area to the National Runaway Switchboard in 2011

*only 19% of runaway or at-risk youth report using hotlines*

**2,054 STUDENTS**

in our service area were homeless at some point during this past school year

*more than a 30% increase from the year prior*

**60% OF  
HOMELESS  
YOUTH**

Reported being assaulted on the streets over the course of the past year

# ADDRESSING THE NEEDS OF HOMELESS YOUTH

## IMMEDIATE HOUSING & SAFETY

The Harbour maintains a 24-hour hotline for youth in crisis to ensure immediate safety and shelter. Our Safe Harbour Emergency Shelter provides short-term housing, crisis intervention, family or individual counseling, and educational support with the goal of reuniting minor youth with their families when possible.

When family reunification is not possible, staff assists youth in locating an alternative safe, stable placement—which may be our own transitional housing.

## COMPREHENSIVE NEEDS ASSESSMENT

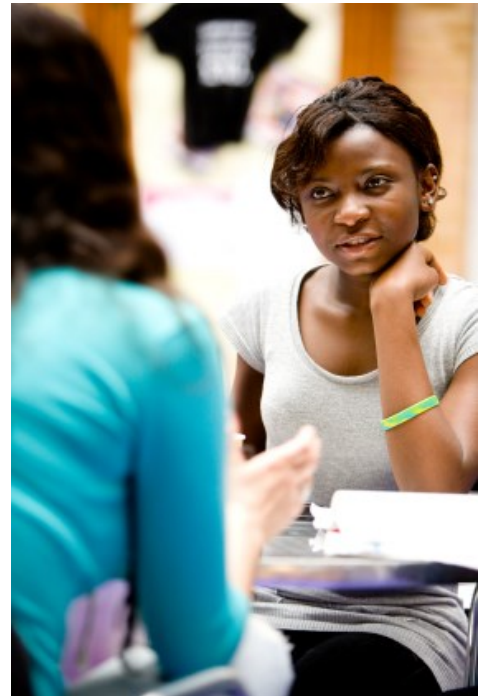
Every youth entering The Harbour's programs is assessed to determine immediate needs and strengths, and a plan is co-developed with the youth to build upon existing abilities and address any skill gaps.

The Ansell-Casey Life Skills Assessment is a critical component of the goal-setting and evaluation process, and measures functioning across nine domains: career planning, communication, daily living, home life, housing and management, self-care, social relationships, work life, and study skills.

## WRAPAROUND CASE MANAGEMENT & SUPPORTIVE SERVICES

All of The Harbour's programs meet youth where they are to create a customized, trauma-informed transition plan. Youth receive comprehensive services including counseling, intensive individual therapeutic case management, referrals for medical and mental health services, instruction in basic life skills, educational support, and therapeutic recreation.

Because youth entering our programs often feel out of control of their lives, victimized, and helpless, The Harbour uses a positive youth development model that helps youth evaluate the consequences of their actions and accept responsibility for those actions.



A recent study by the Brookings Institute revealed that there are **3.5 job openings** for each unemployed worker in Chicago with a bachelor's degree or higher, while there is **less than one job opening** for every unemployed worker with no more than a high school diploma.

*The Harbour's educational support fosters long-term employability and success.*

FY12 SERVICE TO YOUTH

**90 YOUTH**  
14,221 DAYS OF CARE

*The Harbour is the only state-licensed agency providing residential services to homeless youth 18 and over in the north and northwest Chicago suburbs.*

# HARBOUR PROGRAMS

## SAFE HARBOUR EMERGENCY SHELTER



The Emergency Shelter began in 1975 as the first service offered by The Harbour. This program provides immediate safe housing for locked-out, runaway, or otherwise homeless girls ages 12-21. While in the program, staff provides crisis intervention to reunite the girl with her family when possible. Youth unable to return home are connected with community resources, and are placed in a safe, stable environment — which may be our own longer-term transitional housing.

The Shelter prevents family violence and child abuse by providing crisis intervention, services to mend family conflict, and referrals to long-term supportive community resources.

***Our Emergency Shelter fills an unmet community need - there is currently no other emergency shelter for girls east of Palatine, and no shelter in our community serving girls ages 18-21 who may still be in high school.***

## TRANSITIONAL LIVING PROGRAM (TLP)

The Transitional Living Program (TLP) provides housing and supportive services for homeless and abused girls ages 16-21 in a supervised, group setting while they make the transition to self-sufficiency. Girls come to our TLP as a result of being locked out by their family, escaping an abusive home situation, maturing out of foster care, or failed adoptions. Few girls of this age have the skills or resources to begin living independently.

Our TLP provides:

- Independent living skills training
- Therapeutic case management
- Positive youth development curriculum
- Educational and employment support



*“In the last sixteen years, this was the first time and place I ever felt wanted, cared about, and safe.”*

*— Callie, previous Harbour client\**

*\* Read Callie's story on page 7*

## INDEPENDENT LIVING PROGRAM (TLP)

The Independent Living Program (ILP) serves youth ages 16-21 as they establish a stable housing situation and achieve economic independence. Youth live in their own apartments, while The Harbour provides supportive services for up to 18 months, including a gradually decreasing rent subsidy, case management, instruction in adult living skills, educational support, and employment skills development.

Because these youth are typically without resources and unable to rely on their families for support, many lack the skills essential for independent living. Therapeutic Case Managers work with youth to teach skills such as budgeting, managing credit, fiscal planning, housekeeping, pursuit of continuing education, developing job skills, and job hunting and maintenance.

***Graduates of the program have successfully maintained independent living without the need for public assistance.***



*“I’ve learned to become more independent, see my strengths, acknowledge my flaws, and overall, I’ve come to realize the person that I really am, and love myself...”*

*—Jasmine, previous Harbour client*

## SUCCESSFUL TEENS/EFFECTIVE PARENTS (STEPS)

Although teen pregnancy rates have generally declined over the past decade, there are still *over one million pregnant teens annually in the U.S.* It is not uncommon for the parents of these teens to throw them out. Parenting poses a particular challenge for youth, in that many of the demands of parenting are in conflict with the development tasks of adolescent. Parenting youth often lack the emotional and intellectual maturity, life experience, and resources to cope with the demands of parenting without substantial support. These circumstances also make it very difficult for youth to cope with homelessness.

The Harbour’s Successful Teens/Effective Parents (STEPS) program provides supportive services and parenting support to youth ages 16-21. Youth and their children live in their own apartments, while The Harbour provides a gradually declining rent subsidy, case management, life skills training, and parenting support.

Mentoring and counseling are provided by each youth’s Therapeutic Case Manager, who also links the youth to community resources such as childcare, transportation, and job training. ***We are the only agency in the area providing residential services to pregnant and parenting girls.***



**FY12: ALL STEPS YOUTH**  
*maintained custody of their children*

# MEASURING OUR IMPACT

## **SAFE HARBOUR EMERGENCY SHELTER: 23 YOUTH/661 NIGHTS OF CARE**

- 100% of parents of minors were successfully contacted within 72 hours of admission to the Shelter
- 100% of family of minor girls placed more than 72 hours participated in services
- 100% of girls with a planned discharge reported feeling safe while at the Shelter
- 100% of girls from The Harbour service area did not miss more than one day of school due to placement
- 96% of stays resulted in a planned discharge
- 64% of minor youth were reunited with family
- 82% of minor youth were discharged within 3 weeks of admission
- 100% of girls with a planned discharge were successfully linked to community resources following discharge
- 75% of girls with a planned discharge remained in their discharge placement at three month follow-up

## **TRANSITIONAL LIVING PROGRAM (TLP): 40 YOUTH/7,758 DAYS OF CARE**

- 100% of girls reported feeling safe while in the program
- 100% of girls increased their independent living skills as measured by the Ansell-Casey Life Skills assessment
- 100% of girls with a planned discharge were enrolled in high school, graduated high school, obtained GED, or passed 3 out of 5 sections of GED
- 58% of girls with a planned discharge had been employed for at least three months continuously at time of discharge
- 100% of girls with a planned discharge had a discharge plan, which includes linkage to community resources
- 54% of girls in the program more than 90 days successfully graduated to independence
- 100% of girls with a planned discharge reported satisfaction with program services

## **INDEPENDENT LIVING PROGRAM (ILP): 16 YOUTH/2,625 DAYS OF CARE**

- 0% of graduating youth were economically self-sufficient for at least 3 months prior to discharge\*
- 100% of youth with a planned discharge had maintained a stable living situation for at least 6 months prior to discharge
- 100% of youth with a planned discharge reported being satisfied with program services
- 100% of youth with a planned discharge were linked to aftercare services and community resources

## **SUCCESSFUL TEENS/EFFECTIVE PARENTS (“STEPS”): 11 YOUTH/3,177 DAYS OF CARE**

- 100% of youth were linked to essential services (WIC, TANF, parent education) within 6 weeks of program entry
- 100% of youth with a planned discharge had maintained a stable living situation for at least 6 months prior to discharge
- 100% of parenting youth maintained custody of and successfully cared for their children
- 100% of youth with a planned discharge reported satisfaction with program services
- 100% of youth with a planned discharge were linked to aftercare services and community resources

\* The high youth unemployment rate necessitated ongoing nominal rent assistance for in the ILP

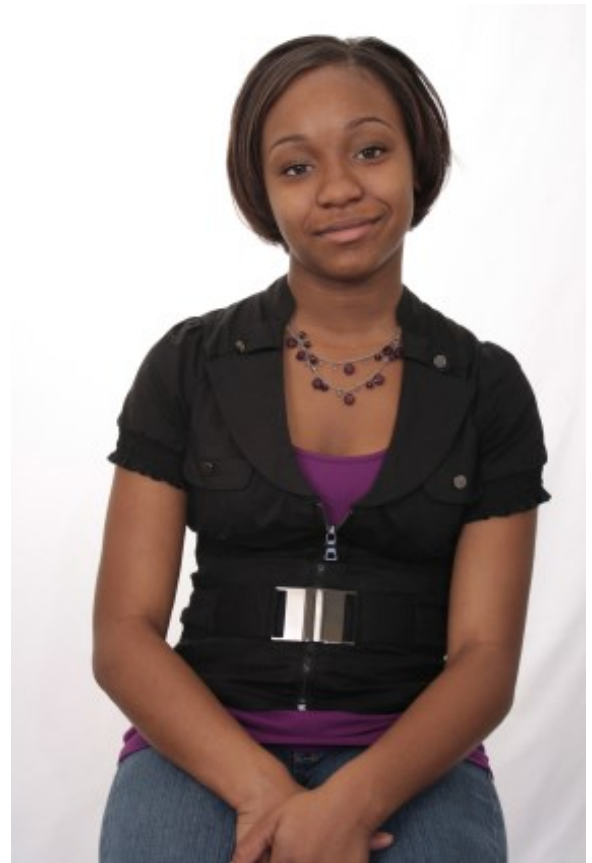


## Callie\*

Callie came to The Harbour's Transitional Living Program after a childhood of trauma. Upon admission, she struggled with behavioral and conduct issues, and lacked many of the skills needed to live independently.

With support from her Harbour caseworker and a therapist at a community mental health center, Callie was able to build upon her strengths and work toward her future. Callie is now making full rent payments toward her one-bedroom apartment in The Harbour's Independent Living Program. Currently in training to become an assistant manager, Callie maintains a full-time job and has been able to save over \$3,000 during her time with The Harbour.

Callie has enlisted in the Air Force and is preparing to ship out this Winter; she hopes to become a JAG officer and eventually a judge. Although Callie continues to struggle with negative family relationships, she has become a healthier, more balanced young woman in control of her future.



## Tricia\*

Tricia's childhood wasn't particularly easy, but she never imagined she would be homeless. After the sudden death of her mother, she thought she would always have a home with her grandmother. Shortly after adopting Tricia, her grandmother's health declined. Soon her grandmother was unable to care for herself or Tricia.

Tricia came to The Harbour, where she moved into an apartment with three other girls. With a safe place to stay and support from her caseworker, she was able to focus on her future. Tricia graduated high school, worked several part-time jobs, and enrolled at Oakton Community College. She saved enough money to afford her own apartment, with assistance from The Harbour's Independent Living Program.

Tricia is completing her last semester to obtain an Associate's degree and plans to transfer to a four year university to pursue her degree in Early Child Education.



*\*Names changed to respect clients' privacy*

# YEAR IN REVIEW

## AT A GLANCE

*FY12 was a year of many projects and improvements!*

**We made it easier for youth to find us online.** In an increasingly digital world, being able to be found on the web is essential. We've updated our website to improve search engine optimization, making it easier for youth to find us when searching for services. *As a result, our site received over 6,000 visits in FY12.* We also maintain Facebook, Twitter, and LinkedIn profiles for optimal accessibility to youth.

**We've put an emphasis on facility improvements.**

Because services are provided to youth at no charge, The Harbour's revenues overwhelmingly support basic needs and programming. As a result, little is left over for maintenance and many cosmetic repairs are deferred. Thanks to an outpouring of support from the community and increased focus on volunteerism (see page 9), we've begun to update our facilities to ensure they provide a safe *and* comfortable environment for youth.



## BET ON THE HARBOUR

*We celebrated the achievements of our youth at our annual spring benefit on May 5th, 2012. "Bet on The Harbour" featured an exciting evening of dinner, music, casino entertainment, and a live & silent auction. Thank you to all who attended—you helped us raise over \$27,000 for our programs!*

### Eymi Ramirez—The Harbour Beacon of Success Honoree

After becoming homeless, Eymi entered The Harbour's Transitional Living Program, where she was able to graduate high school and begin studying at Harper College. During her second semester of college, Eymi learned that she was expecting, and she became one of The Harbour's first participants in the newly formed Successful Teens/Effective Parents program. Since graduating from The Harbour's programs, Eymi has married, earned a pharmacy technician certificate, an associate in arts, and certification as a nurse assistant as well as a medical assistant. She now lives happily with her husband and their beautiful son in the northwest suburbs. At the bottom of Eymi's emails she has the following quote by Abraham Lincoln: "Be sure to put your feet in the right place, then stand firm."

*"Be sure to put  
your feet in  
the right place,  
then stand  
firm."*

### Matthew Staman—Bobby Mayer Commitment to Youth Honoree

Matthew describes himself as a traveler of the world, uncle of three, and singer with the Chicago Gay Men's Chorus. Matthew became involved with The Harbour in 2004 after learning that more than a quarter of gay youth were homeless. He served a six year term on the Board of Directors, including two years as Board Chair. During Matthew's time on the Board, The Harbour opened new programs for parenting youth, and otherwise enhanced and expanded services. Matthew's commitment was key to strengthening the Board and assisting the agency in moving forward to better serve youth in crisis.

# COMMUNITY INVOLVEMENT

*Through efforts to grow volunteerism within the agency, community involvement has increased greatly over the past year. Civic groups, corporate teambuilding groups, and other dedicated citizens helped us with several projects to improve our facilities.*

One of our major ongoing projects is our effort to modernize our aging shelter facility. We have been taking steps to work on updates ourselves to save costs, and launched an internet campaign which generated overwhelming response.

After speaking with a few interior decorating students at the Illinois Institute of Art - Schaumburg, their Design Alliance group created an initiative to redesign the five bedrooms at our Shelter. The students spent months researching our population, conducting interviews with our staff and learning about the services we provide. Their goal was to design a welcoming, functional safe haven for the young women who find themselves at our door.



The students created design boards with an “around-the-world” theme, with each room designed for a maximum \$500 budget. We have been doing work on our end by reaching out to our supporters asking for help to make these design boards a reality. The “adopt-a-room” campaign has been a great success; a local interior designer agreed to oversee the entire project and a local Sherwin-Williams donated paint for the rooms. We have welcomed several corporate and civic groups to spend a day painting and decorating, and our Shelter is looking better than ever.



*“It’s refreshing to know that corporations and businesses continue to make an effort to give back to their communities and assist nonprofit organizations...”*

*— Randi M. Gurian,  
Executive Director*

# FINANCIALS

## Revenue

State Contract	\$ 1,297,200
Private & Local Contracts	84,836
Federal Grants	400,000
Local Government Grants	120,814
State Grants	128,001
United Way	818
Public Support	210,573
Special Events	55,571
Interest	569

<b>Total Revenues</b>	<b>\$ 2,298,382</b>
-----------------------	---------------------

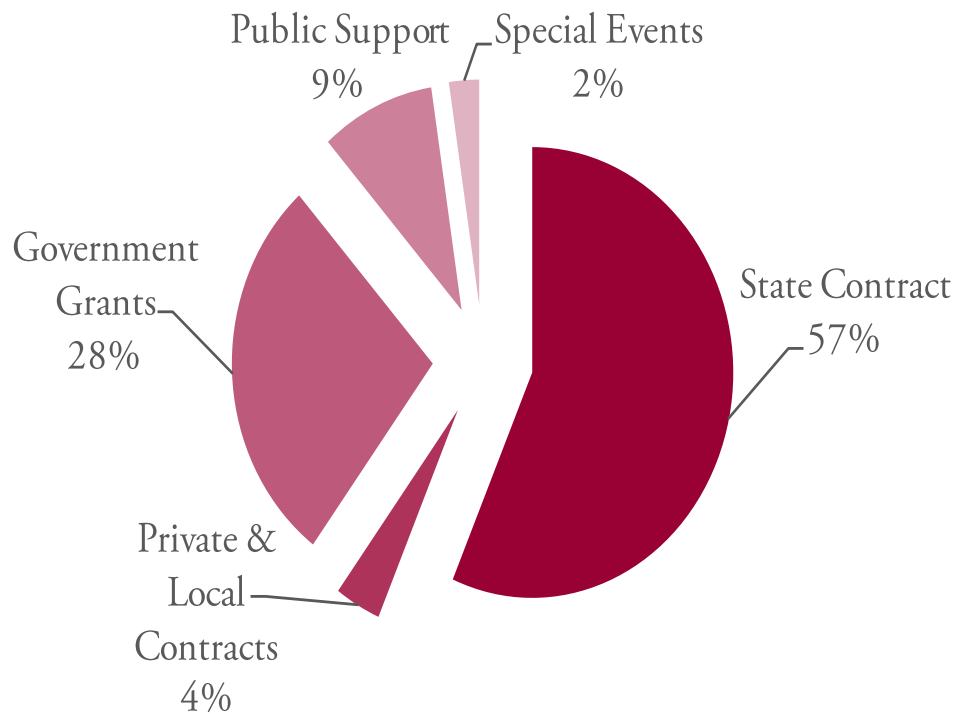
## Expenses

Safe Harbour Emergency Shelter	\$ 185,204
Youth in Transition (Transitional & Independent Living for state wards)	1,216,400
Transitional Living Program - Community	278,897
Independent Living Program	68,738
Successful Teens/Effective Parents	205,048
Administration	216,982
Development	85,183

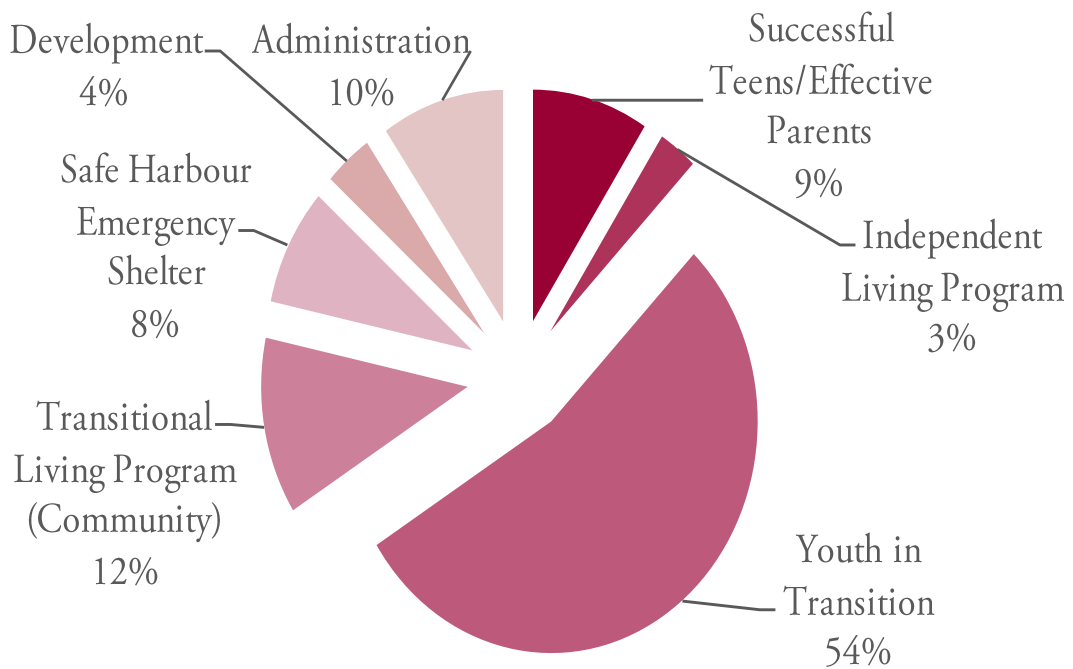
<b>Total Expenses</b>	<b>\$ 2,256,452</b>
-----------------------	---------------------

<b>Increase (Decrease) in Net Assets</b>	<b>\$ 41,930</b>
--	------------------

## WHERE OUR MONEY COMES FROM



## WHERE OUR MONEY GOES



# COMMUNITY SUPPORT

*The Harbour thanks the following for their generous support from July 2011 - June 2012:*

## **CHAMPIONS - \$20,000 AND OVER**

Anonymous  
The Bufka Foundation  
Andrew & Alice Fischer Charitable Trust

## **BENEFACTORS - \$10,000 - \$19,999**

Anonymous  
Blowitz-Ridgeway Foundation  
Helen Brach Foundation  
Pisani Family Foundation  
Village Treasure House

## **SENTINELS - \$5,000 - \$9,999**

Blue Cross and Blue Shield of Illinois  
Entact, LLC.  
Evanston Community Foundation  
George M. Eisenberg Foundation  
Randi & Charles Gurian

## **ADVOCATES - \$1,000 - \$4,999**

Anonymous  
Brewer Family Foundation  
Norma & Bill Brown  
Steve Brown & Marla Kell Brown  
C. Louis Meyer Family Foundation  
Carol Lavin Bernick Family Foundation  
Rebecca Casey  
Finnegan Family Foundation  
Millie & Tom Frawley  
Joy & Rob Guttschow  
Jablon Family Foundation  
John & Susan Dewan Foundation  
Gerald & Kathleen Liace  
Timothy Liace & Cara Bouslog  
Liberty Bank  
Vance & Beth Liebman  
Martha & Doug Lindstrom  
Gayle Malvin  
Park Ridge Community Fund  
The Reichert Foundation  
Rose F. & Alice M. Koffend Foundation

Jeffrey & Barbara Rosengard  
Janice & David Schumacher  
Ted & Juanita Sigg  
St. John the Baptist Greek Orthodox Church  
Matthew Staman & Marin Quezada  
United States Figure Skating Association  
Xerox Corporation

## **GUARDIANS - \$500 - \$999**

Leanne & Edward Berry  
Julie Berthold  
Jean & Tom Bouslog  
David & Joyce Brown  
Mary Kate Driscoll  
Equity Lenders, LLC.  
Suzanne Ergastolo  
First Congregational Church  
Christian Hansen & Molly Jacobsen  
Krista Hubbard  
Northbrook Woman's Club & Foundation  
Park Ridge Juniors  
Philip & Fannie Morris Foundation  
Rotary Club of Wheeling  
Doug & Holly Samz  
Gene Servillo & Rosie Rees  
Steven & Julie Telkamp  
Norman Whyte

## **PROTECTORS - \$250 - \$499**

Ilene & David Abrahams  
Balanced Counseling  
Judy & Roger Bixby  
Eric Boberg  
Mark Bouslog & Alina Lin  
David Bradley  
Brella Productions  
Stewart & Ann Chalem  
Christ Church, United Church of Christ  
Derrick Clifton  
Coyle Foundation  
Dominic & Mary Cronin  
Desks, Inc.

Anne Evans  
Debra & Jim Flynn  
Stephanie & Michael Fox  
Steven & Alene Frost  
Chris Gottschalk  
Jeff Gottschalk  
Scott Haertel  
John Jenks  
Anne-Marie & Colin Kennedy  
Lisa Mendelson  
Motorola Solutions Foundation  
Omron Foundation, Inc.  
Kathy Sanders  
Nicole & Randy Schwab  
Mary Seeberg  
John Seymour & Adele Rapport  
Brad & Lisa Tank  
Mary Kay Thill-Dadabo & Tim Dadabo  
John Van Winkle  
Steven VanSpankeren  
Vista National Insurance Group, Inc.  
Lindsey Whyte & Emilio DiBenedetto  
William & Patricia Williams  
Gregory & Estelle Wojkowski  
Renee Zalatoris

## **SUPPORTERS - \$100 - \$249**

Allstate Appraisal, L.P.  
Cathy & John Bachman  
Hope Bernstein  
Douglass Boyd  
Patricia Cawley  
Nicola Chalik  
Frank & Dorothy Chao  
Church Women United of Des Plaines  
Cook Architectural Design Studio  
Kristen & Michael Cronin  
DD Donovan & Sons Insurance, Inc.  
Des Plaines Ladies of The Elks  
Joan DiLeonardi  
Edward J. Coyne & Company, Inc.  
William & Carole Fishman

Seymour & Susan Frolichstein  
 Michael Goettsch  
 The Goodsearch  
 Kimberly & Michael Gruber  
 Richard Hesler & Kathleen Gianaris  
 Thomas & Sandra Hubbard  
 Brian Jablonski  
 Alisa Jackson & Darrell Comer  
 Darlene Jacobs  
 Sherwin & Ellen Kabins  
 Brea Keating  
 John & Mary Kelly  
 Barbara & Leonard Kuhr  
 Linda Lindstrom  
 Norris Love  
 Paul Lundberg  
 Dorene & John Lynch  
 Richard & Loretta Mole  
 Gayle Nelson  
 Dennis & Linda Nilsson  
 Park Ridge Morning Kiwanis  
 Betsy Pultz  
 Sherri Schmidt  
 Paul Schnitz  
 Joseph Seymour & Erlene Kuizon Seymour  
 Margaret Sinshack  
 Sari Smith  
 Ronald & Audrey Snyder  
 Patrick & Megan Stoltz  
 Swigert & Associates, Inc.  
 United Methodist Women of Park Ridge  
 Genita & Jose Vallesterol  
 Gregory Ward & Bill Lachman  
 Sally Weiss  
 Harold Whitacre

### **FRIENDS OF THE HARBOUR - \$1 - \$99**

Arlington Heights Noon Kiwanis Club  
 AT&T  
 Lynn Barnett  
 Janel Booker  
 Joan & Tom Broderick  
 Sandra Brown & Kerry Rodney  
 Eileen Dollear  
 Felicia Dudek, LCPC & John Dudek  
 Nicole & Edward Farley  
 Joyce Fedor & Stan Morek  
 Peter W. & Bonnie Flanzer  
 Mitchell & Gloria Gibbs

Natalie Goldfein  
 Betty Gordon  
 Art & Carol Gunther  
 Zona & Tom Guttschow  
 High Society Jewelers  
 Nora Judae  
 Adrienne Kamp  
 Carol Kopacz  
 Mark Koziol  
 Alice Kraus  
 Bill & Joan Kretz  
 Molly Krugman  
 Susie Levy  
 Lucille Ligenza  
 Ken & Susan Lorch  
 Stacey Lusk  
 Lance Macon  
 Rose Mary & Michael Mahany  
 Kathleen Marks  
 Robert & Marilyn Mau  
 Jo-Ann & David Mazliach  
 James McColl  
 Bridget McDonough  
 Diane Mielak  
 Carolyn Millard  
 Kathleen Moeller  
 Kevin Mole  
 Dolly Moline  
 Dick & Linda Muller  
 Charles & Marilyn Neuman  
 Beau & Erin O'Hara  
 Cathy Olstad  
 John & Christel Owens  
 Vincent & Rose Parisi  
 Jay Patel  
 Daniel Potter  
 Heidi & Michael Raia  
 Fred & Marlene Rein  
 Linda Reinken  
 Alan & Patty Rubin  
 Lou-Ellen Saidel  
 Julie Sass  
 Philip Sumida  
 The Boston Consulting Group, Inc.  
 John Thomson  
 Jessica Tipesco  
 Veronica & Paul Toussaint  
 Bonnie & Henry Trenkle  
 Rochelle Trilling  
 Edward Trojan

Joycelynn Watkins-Asiyanbi & Charles Asiyanbi  
 Adam Weiss  
 Jessica Zimmer  
 Marlene & Howard Zimmerman

### **IN-KIND DONATIONS**

A Mother's Touch Learning Academy  
 American Society of Safety Engineers  
 Andrew's Open Pit & Spirits  
 Arlington Park Racecourse  
 The Bagel Restaurant & Deli  
 Bed Bath & Beyond  
 Deborah Beinlich  
 Megan Bernardoni  
 Bertucci's  
 Black Ensemble Theater  
 Joel Bloom  
 Blue Man Group  
 Bob Chinn's Crab House  
 Lauren Booth  
 Mark & Mary Braun  
 Brigandi & Associates  
 BuyHappier.com  
 Sherrie Chapman  
 Chicago History Museum  
 Chicago Shakespeare Theater  
 Chicago White Sox  
 Andrew Ciandella  
 Cinemark/Century Theatre  
 City Lit Theater  
 The ComedySportz Theatre  
 Jeff Conroy & Cole Conroy  
 Cosi  
 The Cubby Bear North  
 Sallie & Steven DeAngeles  
 Amanda Delaney  
 Des Plaines Public Library  
 Linda & Rino DiLegge  
 Catherine Donovan  
 Judy & Dave Donovan  
 East Bank Club  
 EJ's Place  
 Louisa Erickson  
 The Erin Copeland Building Minds  
 Rosemarie Fidanzo  
 Matt Finnegan  
 Francesca's North  
 Karen Garcia  
 Ken Giacomino

Wendy Gonzalez  
 Grand Victoria Casino  
 Graziano's Brick Oven Pizza  
 Jessica Hall  
 Hay Caramba  
 Hill's Hallmark  
 Hilton Chicago/Northbrook  
 La Casa De Isaac & Moishe  
 John G. Shedd Aquarium  
 Caitlyn Jones  
 KDX Auto Painting  
 Kohl Children's Museum  
 Karen Kolodzey & George Brigandi  
 Ellen & Irv Kuperman  
 Vickie LaBorne  
 Language Stars  
 Lorelei Lazalale  
 Lettuce Entertain You Enterprises  
 Levy Restaurants  
 Jennifer Lippman-Bruno  
 Locke Lord LLP  
 Lou Malnati's Pizzeria  
 Lynfred Winery  
 The Maids  
 Peggy Kayser  
 Make it Better Foundation  
 John Marquardt  
 JW Marriot Chicago  
 Marriott Theatre in Lincolnshire  
 Massage Envy SPA  
 Edward & Adie Matthew  
 Tim McKernan  
 Nancy Mehlman  
 Metropolitan Performing Arts Centre  
 Metropolitan Brewing  
 MK The Restaurant  
 Thomas & Shirl Morgan  
 Muvico Theaters  
 Raymond & Linda Nicholus  
 Allen Nielson  
 Northlight Theatre  
 Andrea Nunez  
 Oceanique  
 Otto & Settanni, P.C.  
 P.F. Chang's China Bistro  
 Cie Pace  
 Park Ridge Community Women  
 Park Ridge Newcomers Club  
 Philly G's Restaurant

Piedmont Office Realty Trust  
 PRP Wines International  
 Ritz Carlton Chicago  
 Rivers Casino  
 Michelle & Dan Rojo  
 Mark & Kristi Ryken  
 Jim Schmitt  
 Sherwin Williams  
 Todd & Lisa Sigg  
 Sky High Sports  
 Lauren Smola  
 Staybridge Suites  
 Superdawg  
 Sutton Studios  
 Joanna Taylor  
 Thomas Teeling  
 The Latino Advisory Committee  
 The Law Offices of Kevin O'Donnell  
 Three Tarts Bakery  
 Timeline Theatre Company  
 Elizabeth Townson  
 Trader Joe's Store #698  
 Tru  
 Gerri Tyre  
 Victory Gardens Theater  
 Carol Walker  
 Warm Wishes  
 Nancy Webber  
 Jackie Willer  
 Zanies Comedy Club  
 Michael Zywanski

## GET INVOLVED!

There are many ways to support youth in our care:

### Make a monetary gift

**\$50** provides three meals a day to a girl in our Shelter or Transitional Living Program for a week

**\$175** pays a week's rent for a young mom and her baby

**\$1,500** provides apartment set-up for a working youth's first apartment

*A gift of any size supports our services to youth!*

### Make an in-kind donation

*You can help The Harbour provide a comfortable living environment for youth in our care by donating new or gently used items from the following list:*

Cooking utensils	Smoke detector
Dressers	Flashlight
Kitchen tables	Batteries
Bed frames	Hangers
Sheets	Light bulbs
Pillows	New toiletries
Toddler furniture	Gift cards
Alarm clocks	Baby clothes
Fire extinguisher	Curtains/rods

### Volunteer

*Whether you are looking for a long-term commitment or a one-time opportunity, we have a way you can help.*

Tutoring  
 Teaching at Life Skills Groups  
 Moving assistance  
 Adopt-A-House  
 Creating welcome baskets for new clients

**For more ways you can help, visit our website at [www.theharbour.org](http://www.theharbour.org) and click "Get Involved"**

*Every effort has been made to report contributions fully & accurately. We apologize for any errors & ask that you forward any corrections to our Office Coordinator, Michelle Gorka, at (847) 297-8540 or [michelle@theharbour.org](mailto:michelle@theharbour.org).*

*Thank you for your understanding and generosity to The Harbour!*



## **EXECUTIVE DIRECTOR**

Randi M. Gurian, LCSW

## **BOARD OF DIRECTORS FY12**

Rebecca Casey  
Mary Kate Driscoll (Secretary)  
Joy Guttschow (Chair)  
Krista Hubbard  
Timothy Liace  
Martha Lindstrom (Treasurer)  
Gayle Nelson  
Jay Patel  
Ted Sigg

## **LIFETIME MEMBERS**

Leanne Berry, CPA  
Joan W. DiLeonardi, PhD  
Stewart Chalem  
Dennis Nilsson  
Mary Seeberg  
Gene Servillo  
Matthew Staman  
Lindsey J. Whyte

*The Harbour is licensed as a Child Welfare Agency by the Illinois Department of Child and Family Services (DCFS). All of our programs are conducted in accordance with the Best Practices Standards of the Child Welfare League of America.*

# *The Harbour* Inc.

**1440 Renaissance Dr., Ste. 240**

**Park Ridge, IL 60068**

**Ph: 847.297.8540**

**Fax: 847.297.8562**

**[www.theharbour.org](http://www.theharbour.org)**



Find us on Facebook at  
[facebook.com/theharbourinc](https://facebook.com/theharbourinc)



Follow us on Twitter at  
[twitter.com/the\\_harbour](https://twitter.com/the_harbour)



Connect with us on LinkedIn at  
[linkedin.com/company/the-harbour-inc-](https://linkedin.com/company/the-harbour-inc-)